

Enjoy
Every
Moment



A forever address.

ALIVE
WITH
FESTIVITY.



3BHK LAVISH LIFESTYLE

In Ahmedabad, a city where heritage breathes through every pol, and progress hums through every skyline finding the right home is more than a decision. It's an emotion. At Festival Vibes, that emotion is honoured with space, light, and soul. This is where your new beginning takes root in familiar soil. Where the pace of the city meets the peace of a community thoughtfully designed to feel like home from the moment you arrive.

A BLOOM OF

belonging

SCAN FOR RERA

MAA15548/
190725/310329



gujrera.gujarat.gov.in



ABOUT GROUP

The Festival Group has played a defining role in Ahmedabad's real estate evolution for over 30 years delivering projects that balance innovation with intention, scale with sensitivity, and design with long-term impact. With a portfolio that spans residential, commercial, and urban redevelopment, we approach every project with a focus on environmental responsibility, thoughtful planning, and modern aesthetics.

What sets us apart is not just how we build, but why we build. We see real estate as a way to contribute to the city's character, create more livable communities, and set higher benchmarks for sustainable growth. Backed by robust project management, transparent practices, and a deep commitment to quality, The Festival Group continues to transform urban spaces responsibly, intelligently, and with integrity.



ABOUT PROJECT

Cradled in the soul of Ahmedabad's ever-awakening skyline, this 3BHK lifestyle enclave is a welcoming home for the discerning few. Curated by The Festival Group and brought to life with the artistry of Beyond Green, this project is a celebration of elevated living rooted in design, lifted by nature, and alive with joy.

The residences blend privacy with openness, offering sunlit rooms, airy layouts, and seamless transitions between indoors and outdoors. It's a feeling of sunlight streaming through your windows, of laughter echoing through green corridors, of community and calm finding the perfect rhythm.

Welcome to a space where life breathes easy! In steps of comfort, stillness, and seamless design.



ABOUT ARCHITECTS

Festival Vibes owes its distinctive identity to the design sensibility of Devang Waghela, an architect known for blending precision with quiet elegance. Every line drawn and every detail planned is guided by a single principle: design must serve both purpose and poetry. Under his leadership, the design philosophy at The Festival Group marries form with function delivering structures that are elegant, efficient, and emotionally intelligent.

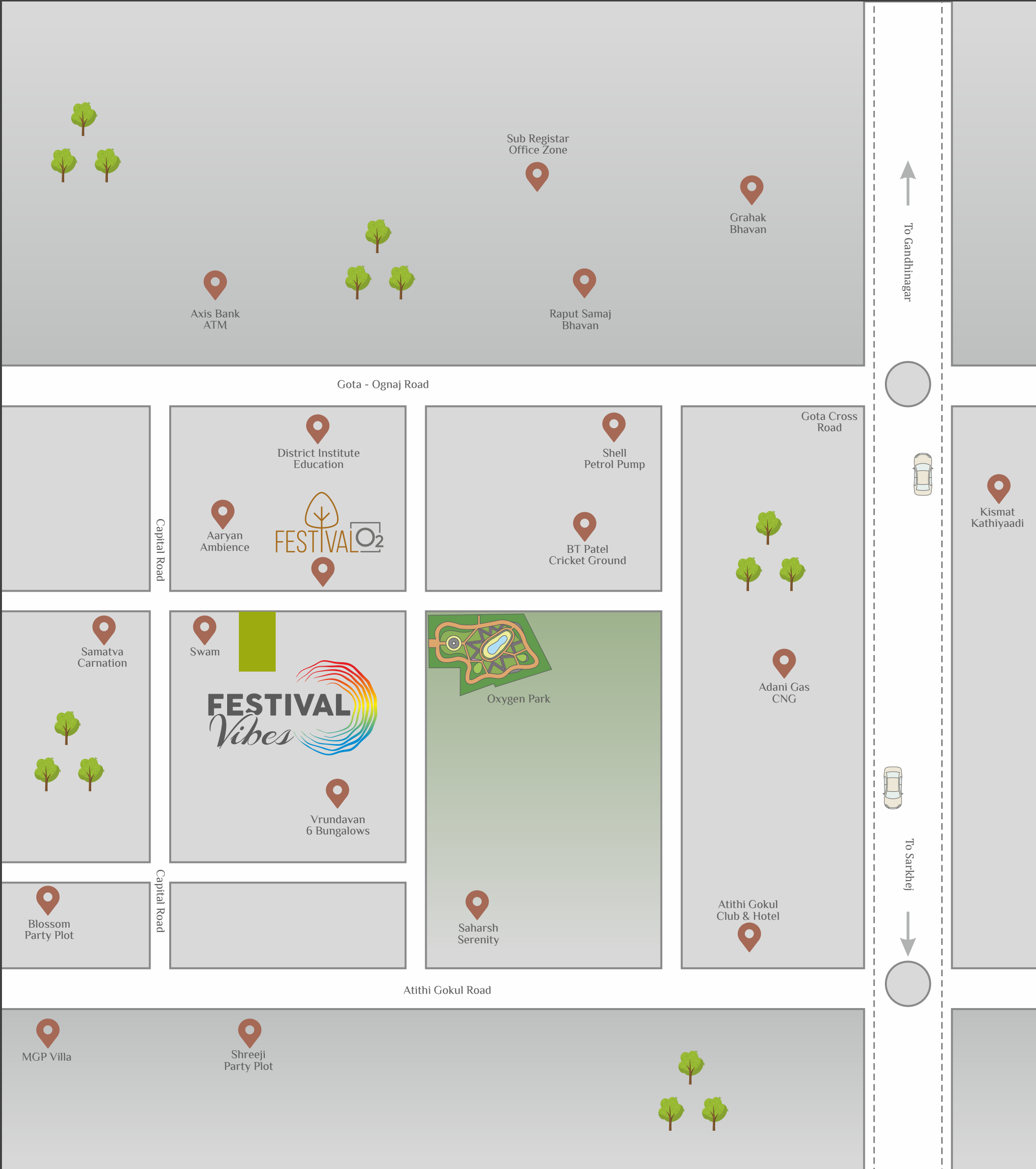
The outcome is thoughtfully designed environments that balance aesthetic appeal with long-term functionality. Thus, make a strong visual statement to foster better living, stronger communities, and enduring value.



ABOUT LANDSCAPE ARCHITECTS

The award-winning architects at Beyond Green bring their signature blend of ecological sensitivity and artistic vision to this project. Their philosophy blends ecological responsibility with emotional resonance creating landscapes that do more than beautify.

The greens at Festival Vibes are more than ornamental; they are purposeful, thus, framing conversations, guiding footsteps, and gently blurring the lines between nature and home. Be it the winding paths or tranquil courtyards bathed in light, every corner is crafted with aesthetic grace and ecological intent.



LOCATION



Please Note: Developers reserves the rights for alteration of specification and design. all dimensions / area are approximate average & subject to variation. Irregular payments shall cause cancellation of booking AMC, TORRENT, legal expenses, Maintenance charges, Maintenance deposit. Stamp Duty, Registration charges, taxation, GST, Legal Charges or any other kind of govt. levies are to be born by member as actual. as and hen applicable. This brochure is not be treated as part of the legal document and it is for the easy display of project.

Disclaimer: The details, facts, specification, figures mentioned in brochure are indicative for information purpose only and are subject to modification/compliance required as per RERA act. subject to ahmedabad jurisdiction.



AHMEDABAD *eternally*



ROOTED, ELEGANTLY ELEVATED

In the heart of this timeless city stands your home, perfectly placed to let you live in rhythm with everything that matters. Here, is a way of being deeply rooted in culture, elevated by convenience, and inspired by the city's ever-beating soul. Step outside and the city unfolds like a celebration of vibrant streets, soulful food, and corners that know your name.

It is here that life flows effortlessly, weaving between workday rush and weekend leisure, between the hush of a peaceful morning and the buzz of an evening out. A walk becomes an experience. A detour turns into a discovery. This is a place where routine feels like ritual and every day carries a dash of delight.



FESTIVAL O2

FESTIVAL
Vibes

ARRIVE WITH *pride*

The grand gateway is designed to evoke presence, purpose, and pride. Framed by architectural symmetry, soft lighting, and curated greens, it stands tall as a statement of identity. What welcomes you is a sense of calm, elevated by thoughtful detailing wide driveways, landscaped peripheries. Because where you live matters. And how you're welcomed in. That matters even more.



THE HIGH *life*

It's the good life: elevated. Beyond the ordinary,
into a realm where sunlight dances through
your windows and every view feels like a
reward.



Welcome to a world where calm meets charisma. Where each home is a signature of your style. Drenched in sunlight, wrapped in privacy, and rooted in elegance, every space flows with the ease of your everyday rhythm.

This is where luxury feels lived-in, and festivity flows happily in the air. A fine home does more than protect, it resonates with your essence. This is where your lifestyle finds its befitting reflection.

THE PERFECT MATCH TO YOUR

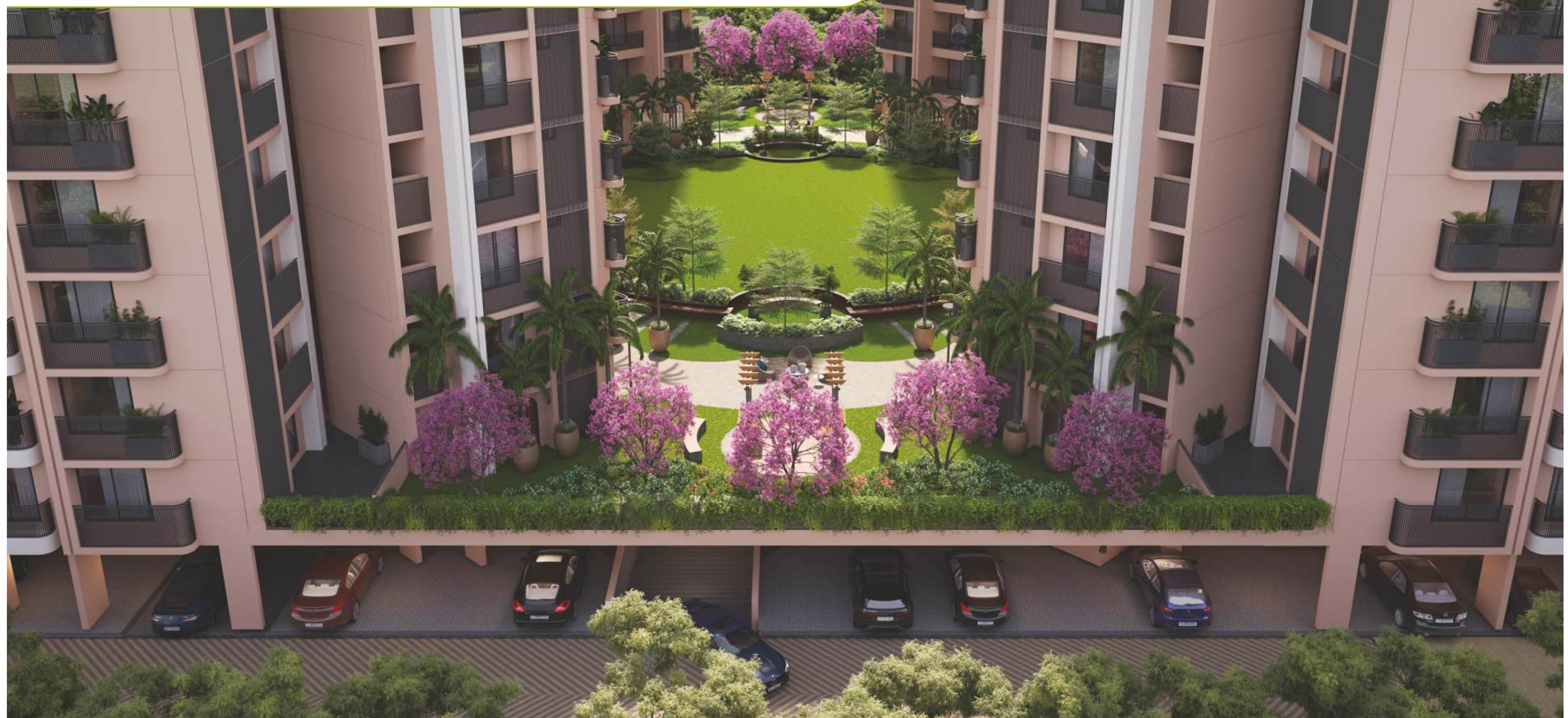
lifestyle

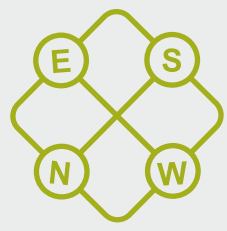




A BLOOM BETWEEN *Dreams*

The everyday finds its place below, tucked neatly into the basement where vehicles rest in quiet order. And above, rises a podium where greens unfurl, blossoms spill between towers. Children find space to play without worry, families gather for evening strolls, and neighbours pause amidst vibrant blossoms that soften every view. It's a rare balance where the foundation takes care of your everyday needs, and the space above opens into a dreamlike green heart.





1st amenities PODIUM FLOOR LAYOUT PLAN

TOWER A	AMENITIES AREA	SIZE
01	PRAYER HALL	28'6"x29'3"
TOWER B		
02	LIBRARY/WFH	28'6"x29'3"

TOWER C	AMENITIES AREA	SIZE
03	INDOOR GAME	34'3"x29'3"
04	INDOOR GAME	29'3"x43'6"
05	BADMINTON COURT	—
TOWER D		
06	DANCE PARTY/ ACTIVITY ROOM	34'3"x29'3"
07	THEATER ROOM	20'3"x29'0"
08	CAFÉ AREA	23'6"x29'3"

TOWER E	AMENITIES AREA	SIZE
09	GYM	55'0"x29'3"
10	F.TOILET	23'6"x14'3"
11	M.TOILET	23'6"x14'6"
TOWER F		
12	BANQUET HALL	89'6"x29'3"
13	TODDLER PLAY AREA	44'6"x25'0"
14	SOCIETY OFFICE	16'0"x14'6"

COMMON PLOT	AMENITIES AREA
15	CHILDREN'S PLAY AREA
16	BADMINTON COURT
17	PICKLE BALL COURT
18	WATER BODY
19	LAWN AREA
20	OPEN SEATING AREA
21	LADIES SEATING AREA
22	WATER BODY SEATING AREA
23	DECK AREA
24	SWIMMING POOL

18.00 MTR WIDE T.P. ROAD





JUNIOR JUNCTION

- PICKUP & DROP ZONE
- CHILDREN PLAY AREA
- DOUBLE HEIGHTED BADMINTON COURT
- MULTIPURPOSE COURT (TENNIS, PICKLEBALL, VOLLEYBALL)

THE HEALTH HUB

- AEROBIC
- CARDIO
- YOGA & MEDITATION ROOM
- WALKING AREA
- JOGGING TRACK
- TODDLERS PLAY AREA
- GYM WITH FITNESS



SAFETY & FACILITY

- 24 HRS CCTV SURVEILLANCE
- WELL EQUIPPED SECURITY CABIN
- 24 HRS SECURITY
- FIRE SAFETY
- GENERATOR

ART & AURA

- DECORATIVE ENTRANCE FOYER
- ENTRANCE WITH WATER BODY
- LARGE ENTRANCE GATE
- DECORATIVE PLANTATION
- ATTRACTIVE STREET LIGHT



50+ amenities



CHILL CIRCLE

- THEATER ROOM
- INDOOR GAME ROOM
- SQUASH COURT
- LIBRARY
- ACTIVITY ROOM/ DANCE PARTY ROOM
- SPLASH POOL FOR CHILDREN
- SWIMMING POOL
- CHANGING ROOM / TOILET
- ATTRACTIVE GAZEBO SEAT OUT

SPECIAL FEATURES

- EV CHARGING POINT
- SOCIETY ADMIN OFFICE
- HANDICAPED RAMP
- ELECTRICAL METER ROOM
- ADANI GAS CONNECTION
- ROOF TOP SOLAR PANEL FOR COMMON LIGHT
- CAR WASH AREA
- 24 HRS WATER SUPPLY WITH PRIVATE BOREWELL
- BASEMENT CAR PARKING
- TWO-WHEELER PARKING
- ALL TOWERS HAVE STRETCHER & SERVICE LIFT
- WORK FROM HOME SPACE
- ALLOTTED PARKING

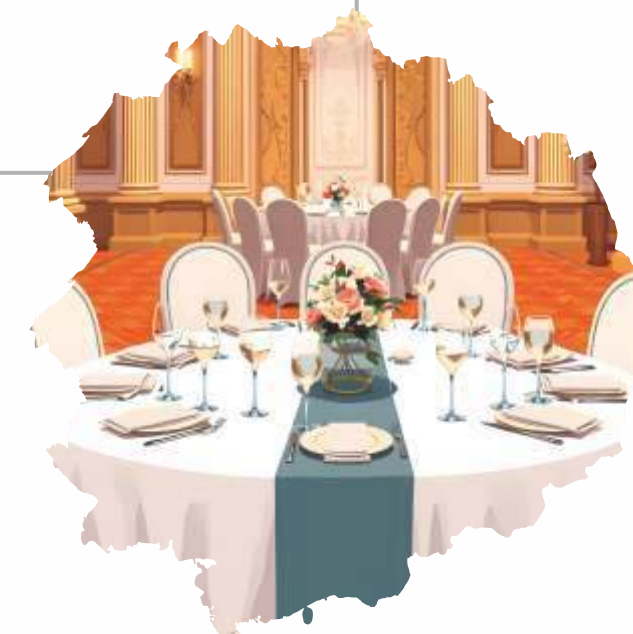
THE SENIOR'S SPOT

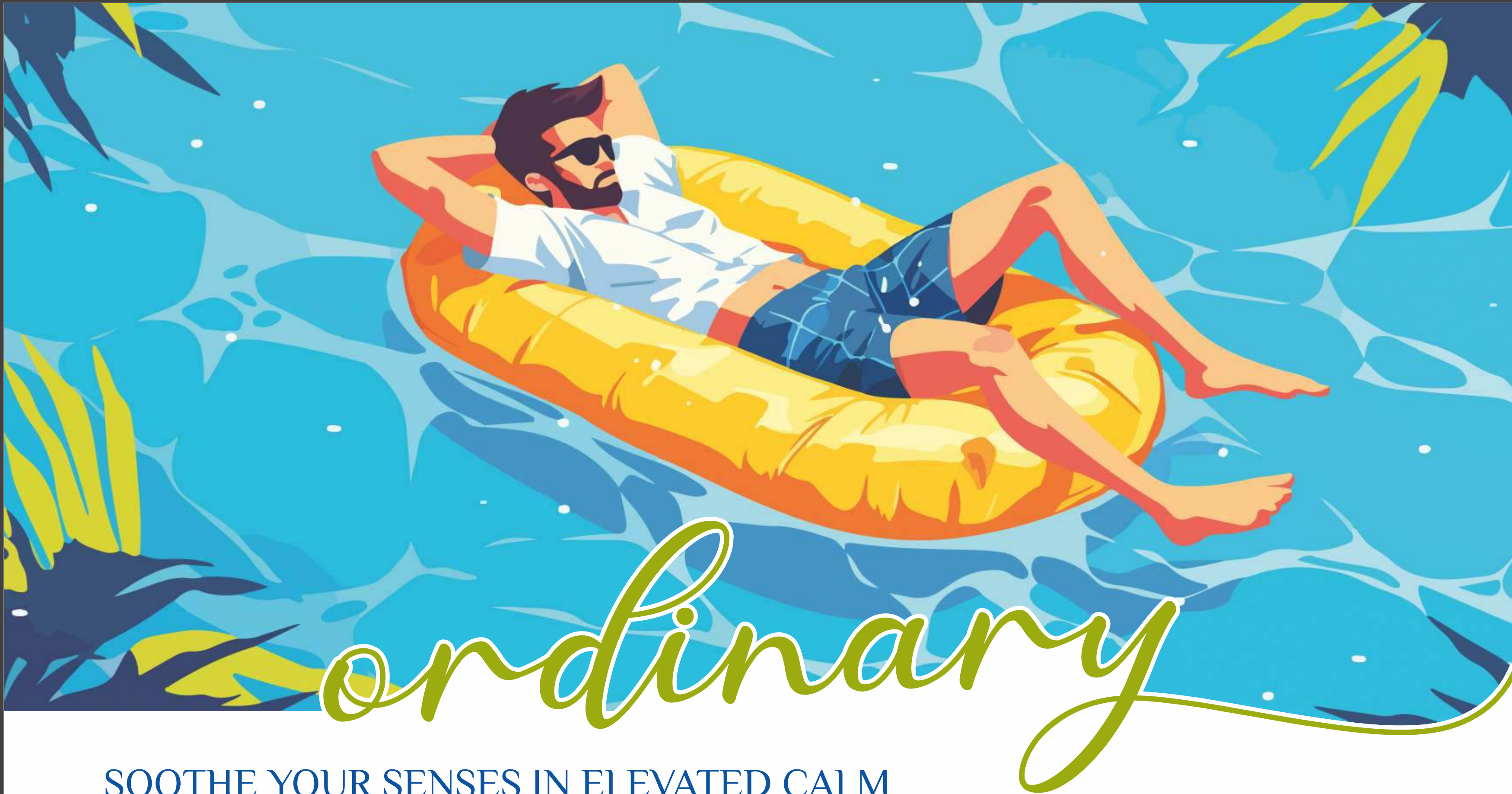
- SENIOR CITIZEN SEATING AREA
- LANDSCAPED GARDEN
- OUTDOOR SEATING AREA
- PRAYER ROOM



SOCIAL CIRCLE

- MULTIPURPOSE BANQUET HALL
- MULTIPURPOSE LAWN
- CAFÉ AREA
- LADIES SEATING





SOOTHE YOUR SENSES IN ELEVATED CALM

WATER, SKY AND YOU.

Take a dip or soak in the stillness, the poolside offers precious moments to escape from the mundane. Here, the water isn't just cool; it's calming. It mirrors the sky, dances with the breeze, and welcomes you to drift, float, or simply sit by its edge with a book and a breath. No rush. No noise. Just water, air, and the subtle art of doing nothing beautifully. This is elevated leisure designed to soothe your senses.





LOUNGE. LAZE.
BREATHE. IN
bliss

DESIGN THAT GLOWS WITH EVERY

ripple

The water bodies at Festival Vibes are not just features of the landscape; they are moments of calm, reflections of elegance, and carriers of quiet joy. With every ripple, the surface catches the light, casting shimmering patterns across walkways, walls, and moods alike. By day, they mirror the sky. By night, they capture the glow of curated lighting, turning stillness into spectacle. This is where design flows.





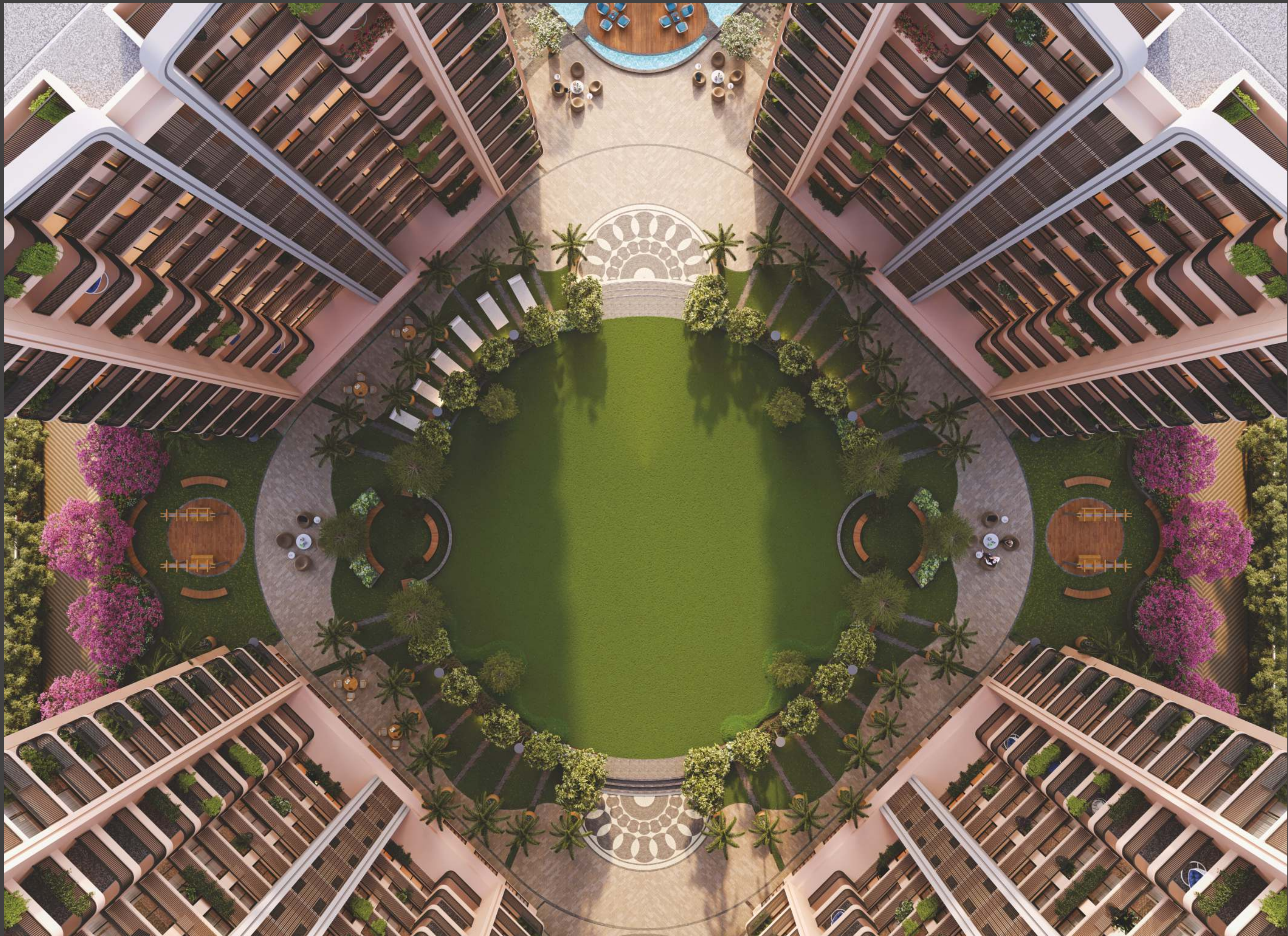
enlivening

A WORLD BLOOMING WITH WONDER

Life finds its rhythm here between soft garden paths and sun-dappled play zones. The air feels lighter, the mornings gentler, and laughter echoes like music through green-laced corridors. This is a community where childhood blossoms freely, where every tree becomes a friend, and every breeze tells a story.

There's room to play, to pause, to breathe. To grow roots and wings at once. In every petal, patch, and playful corner, there's a quiet kind of joy. Wide open spaces invite imagination to run wild in wonder.







PRESTIGE IN *Height*

The towers stand tall in perfect harmony, framing an open canvas of green that breathes life into the community. This is a statement of stature, of belonging to a lifestyle that is defined by distinction. The landscaped foreground welcomes you with a grand sense of arrival, while the towers soar upwards as symbols of ambition and elegance. Every balcony opens to views that stretch wide, inviting light, air, and the city's skyline into your everyday.





Serenity AT REST

The shaded pergola seating, set amidst lush gardens and vibrant blossoms, becomes a natural retreat where calm takes a comfortable seat by your side. It is a space designed for reflection as much as for togetherness whether you're enjoying a quiet evening alone, sharing stories with a friend, or simply soaking in the gentle light of dusk. It's a corner that invites you to linger a little longer, to breathe a little deeper, and to rediscover the beauty of doing nothing at all.



Every ripple here tells a story. The grand fountain, set like a living sculpture at the heart of the courtyard, greets you with its graceful arcs of water and shimmering reflections. The shimmering fountain and open vistas, are sparkling reminders that your home is crafted for moments of grandeur. The sound of water blends with laughter, conversations, and footsteps, creating an atmosphere where everyday arrivals feel like celebrations.

THE GREETING
Flow

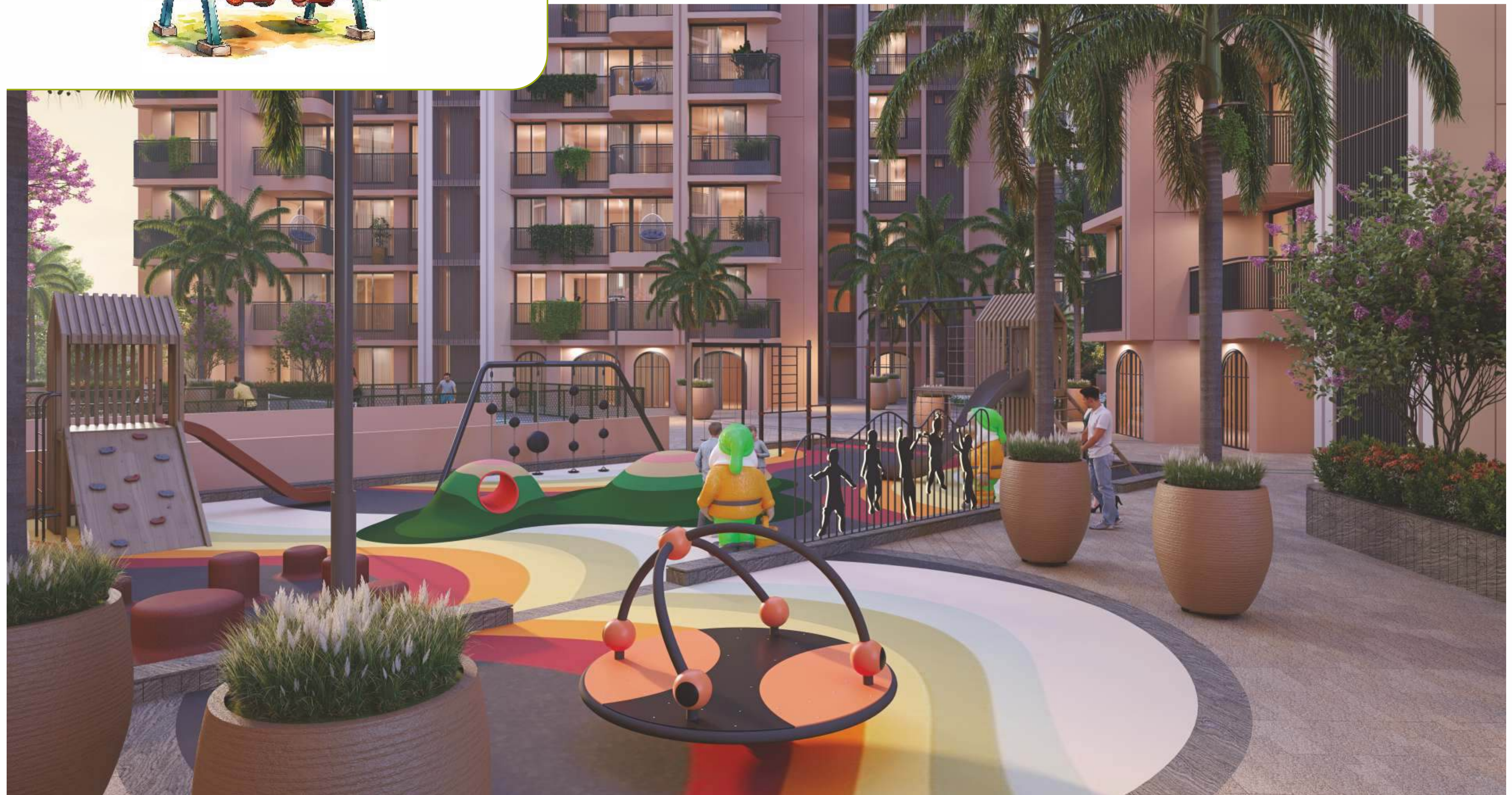
An aerial view of a modern apartment complex courtyard. The courtyard is paved with light-colored tiles and features a central circular fountain with a bird sculpture. To the left is a blue tennis court with white lines and a net, where two people are playing. To the right is a colorful playground with a rainbow slide and various play structures. In the background, there is a green lawn area with palm trees and a building entrance. The surrounding apartment buildings have multiple floors with balconies and large windows.

A COURT
THAT SPEAKS
YOUR SPORTING
language



A PLAYGROUND OF *Memories*

The vibrant play zone is a space where energy runs free, curiosity finds expression. This is where little footsteps leave big imprints chasing friends, conquering climbing walls, or spinning into giggles under the evening sky. Here, every moment of play becomes a memory in the making. A place where parents watch with pride, children live their happiest chapters, and families discover that true luxury lies in the freedom to laugh, to play, and to grow together.

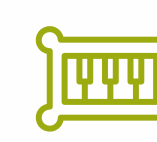




funspace

A SAFE SPACE TO JUMP, LAUGH, AND IMAGINE

Childhood is meant to be a little wild, a little loud, and a whole lot of fun. That's why we've created a space where kids can just be themselves. An indoor play zone that's not only vibrant and engaging but designed with comfort and safety at its core. Here, soft flooring cushions every tumble, while colourful play structures invite little adventurers to climb, crawl, and conquer. Whether it's a rainy afternoon or a sunny morning, this is a place that never says no to play.





A SPACE FOR EVERY MOOD AND *moment*

Whether you're in the mood to sweat it out at an energizing aerobics session, lose yourself in a cinematic escape in the theatre hall, or challenge friends to a lively indoor game: there's always a corner that speaks your language. Socializing becomes easy with dedicated space to host birthday parties, community get-togethers, or impromptu dance nights with equal grace. At Festival Vibes, you'll find spaces that adapt to your mood and elevate your moments.





EVERYDAY DESERVES A SPACE TO *unwind*

Life moves fast, but here, you'll always find a moment to pause. Everyday living is thoughtfully balanced with spaces crafted to help you slow down, reconnect, and recharge whether alone, with friends, or with your community. One day, it's a celebration space echoing with music and laughter; the next, it transforms into a calm sanctuary for yoga and guided meditation. For those who seek stillness in pages rather than poses, the library offers a quiet escape. Choose well as there are plenty of options.





wellness THAT WORKS FOR YOU

Wellness is no longer a weekend goal. It's a way of life that starts right where you live. The state-of-the-art Gym is a space crafted to support your journey, your pace, and your priorities. Whether you're chasing a stronger core, a clearer mind, or just the joy of movement, the environment is tailored to suit beginners and pros alike. Natural light pours in. Music fuels your momentum. Flexible, focused, and always within reach.

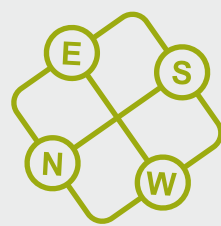


Every home is a reflection of planning that thinks ahead. From the positioning of windows to the direction of each room, everything is laid out to invite not just comfort, but clarity. Sunlight streams in at just the right time, filling your living spaces with warmth, energy, and a subtle sense of rhythm that uplifts your day. Spaces that breathe. Layouts that flow. Corners that feel just right. It's the kind of planning that welcomes positivity, lightness, and a quiet sense of belonging.

PLANNING
THAT THINKS

ahead





2ND TO 13TH
typical
FLOOR LAYOUT
PLAN

18.00 MTR WIDET. P. ROAD



type-1 TYPICAL FLOOR PLAN

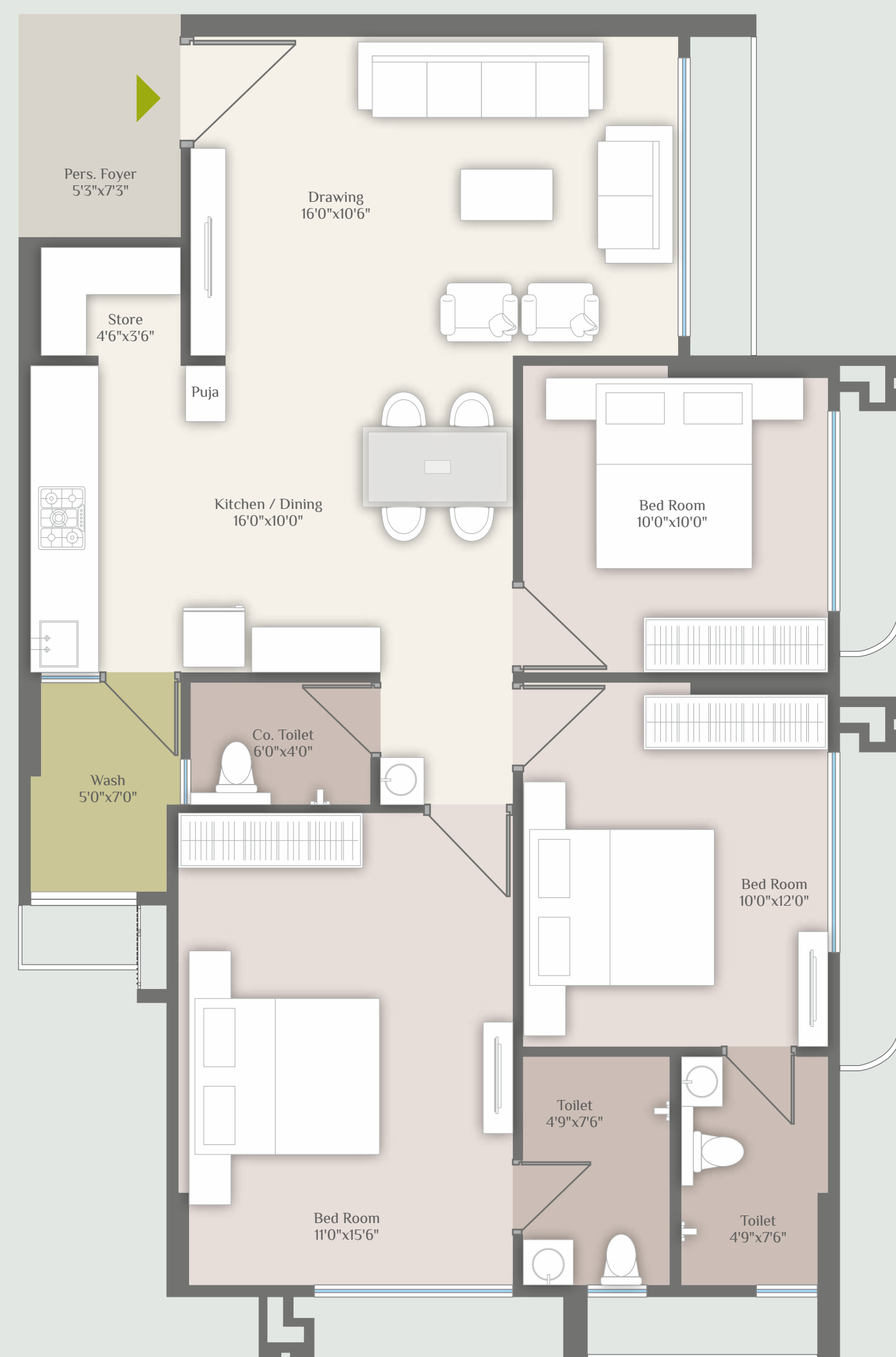


type-2 TYPICAL FLOOR PLAN



type-3

TYPICAL FLOOR PLAN



SPECIFICATION



STRUCTURE
Earthquake resistant structure design.



WALL
Inside wall mala finish plaster and outside wall double coat Sand face plaster with texture.



FLOORINGS
vitrified tiles flooring for all rooms & utility area. China mosaic in terrace to resist heat & water proofing treatment in terrace.



KITCHEN
Granite platform glazed tiles cladding up to lintel level, adequate light point for kitchen appliances and stainless steel sink of good quality.



DOORS & WINDOWS
Decorative wooden door for main entrance & wooden. Flush door with wooden frames for other. Aluminum sliding windows in all rooms.



ELECTRICAL
Concealed electric wiring with adequate electric points in all area. ISI modular electrical accessories of standard quality. ISI copper wire of standard distribution board with miniature circuit breakers to ensure safety.



BATHROOM
Digital Glazed tiles flooring & up to Lintel level. Equivalent fitting for bath, corrosion leak-proof pipe & fittings. (CPVC & UPVC), equivalent SS fittings.



PAINTS
All exterior walls with acrylic paints & interior all with putty finish.



LIFT
Stretcher & Passenger Lift.

crafted
TO STAND TALL



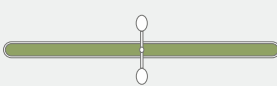


THE FIRST *Impression*

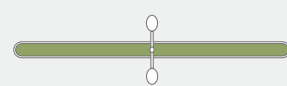
The iconic arched façade stands tall as a mark of grandeur, creating a striking identity that sets your address apart. The thoughtfully designed commercial frontage at the ground level brings everyday conveniences right to your doorstep. Wide roads and a planned driveway ensure smooth access, while shaded greens and well-laid parking bays add a touch of order and elegance to the experience of arrival. Here, prestige begins at the entrance, continues through the arches, and extends into the very rhythm of your lifestyle.



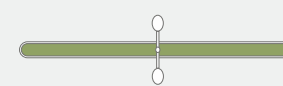
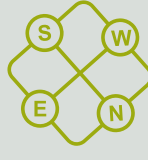
ground FLOOR LAYOUT PLAN



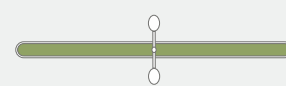
18.00 MTR WIDE T.P. ROAD



basement FLOOR LAYOUT PLAN



18.00 MTR WIDE T.P. ROAD



@ AHMEDABAD

ongoing projects

FESTIVAL
HERITAGE
SPACE

SHOPS | SHOWROOMS | OFFICES



@ RELIEF ROAD

lush
meadows
weekend villa

WEEKEND VILLA



@ KANTHARPURA

Earlier Successfully
Completed Projects By



past projects

FESTIVAL
O₂

3BHK LAVISH APARTMENTS



@ GOTA - SCIENCE CITY ROAD



Ekta Festival

3BHK SIGNATURE APARTMENTS



@ NARANPURA

THE FESTIVAL
RESIDENCY

3BHK APARTMENTS & 4BHK BUNGALOWS



@ GOTA

the
festival
RESIDENCY

3BHK LAVISH APARTMENTS



@ VAISHNODEVI CIRCLE

serene
festival

3BHK LAVISH APARTMENTS



@ THALTEJ

Shivam
avenue

1&2 BHK APARTMENTS & SHOPS



@ DHOLKA

Gopala
nand
RESIDENCY

2BHK LUXURIOUS APARTMENTS



@ CHANDKHEDA

Developer:
FESTIVAL LIVING SPACE

Project Address: **FESTIVAL VIBES**

Opp Aaryan Ambience,
Nr. Festival O2 & Oxygen Park,
S.G. Highway, New Science City Road,
Ahmedabad

Corporate Office Address:
208, Swanik Arcade, Opp Arjun Greens,
Nr Vardan Tower, Pragatinagar, Naranpura,
Ahmedabad - 380013

Mobile Number : +91 88821 38882 | Email: sales@thefestivalgroup.in
Web Site: www.thefestivalgroup.in

ARCHITECT

SPLINE | design
ARCHITECTS & INTERIOR DESIGNERS

LANDSCAPE ARCHITECTS

BEYOND GREEN
Landscape Architecture | Architecture

STRUCTURAL DESIGNER

SETU
INFRASTRUCTURE

MEP



3D DESIGN



BROCHURE DESIGN



SCAN QR. CODE

LOCATION



WEB



BROCHURE

